

Index to the additional figures for Nieuwland, Ditman & Kuperberg (2010).

Page 2, additional Figure 1:

Experiment 1, ERPs to critical words in underinformative and informative statements computed using a 500 to 0 ms pre-CW onset baseline.

Page 3, additional Figure 2:

Experiment 1, ERPs to critical words in underinformative and informative statements for items with a relatively small versus large LSA difference between conditions.

Page 4, additional Figure 3:

Experiment 1, ERPs to the sentence-initial scalar quantifiers “Some” and “Many”.

Page 5, additional Figure 4: Experiment 2, ERPs to critical words in underinformative and informative statements computed using a 500 to 0 ms pre-CW onset baseline.

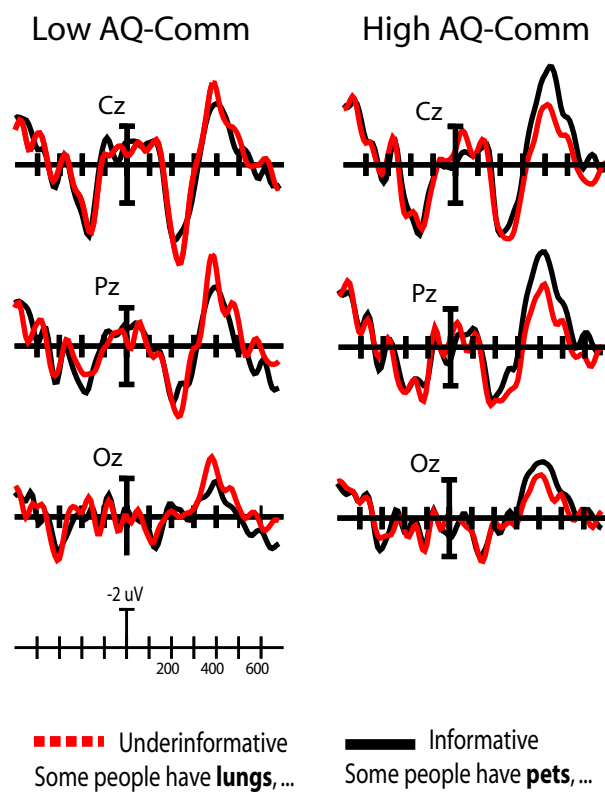
Page 6, additional Figure 5:

Experiment 2, ERPs to critical words in underinformative and informative statements for items with a relatively small versus large LSA difference between conditions.

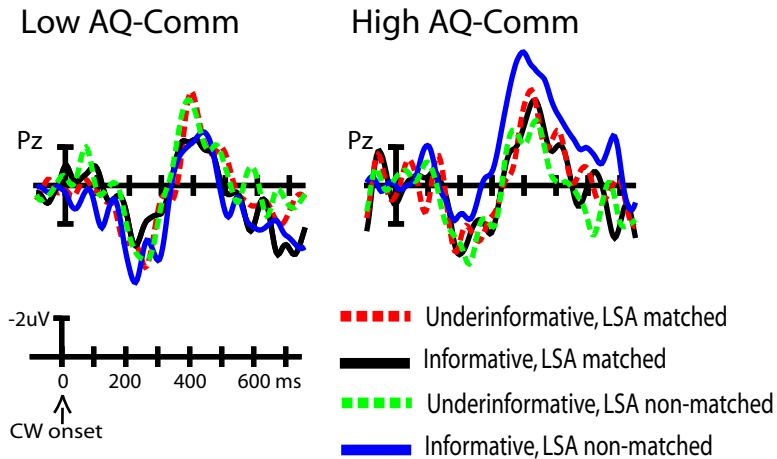
Page 7, additional Figure 6:

Experiment 2, ERPs to the sentence-initial scalar quantifiers “Some” and “Many”.

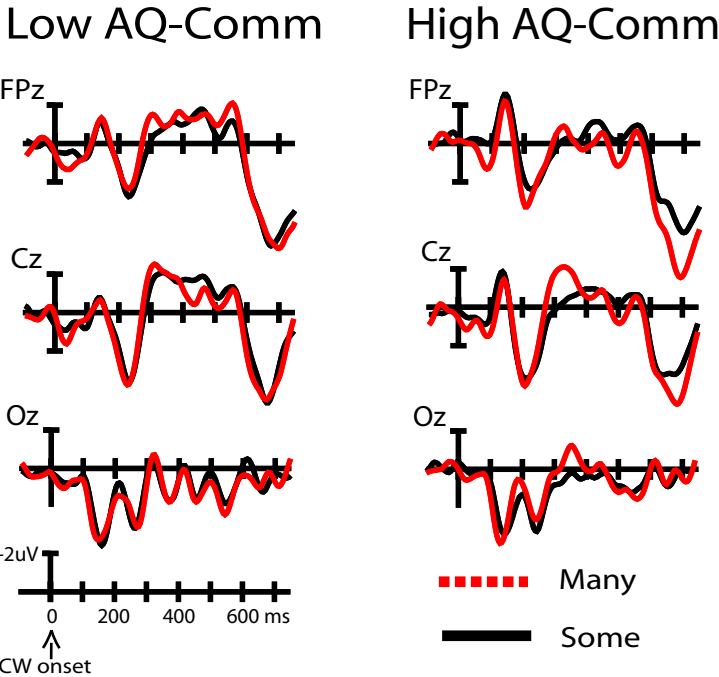
Additional Figure 1. Grand-average ERP waveforms, computed using a -500 to 0 ms pre-CW baseline, elicited by critical words in underinformative and informative statements from Experiment 1, shown at electrode locations Cz, Pz, and Oz. In this and all following figures, negativity is plotted upwards.



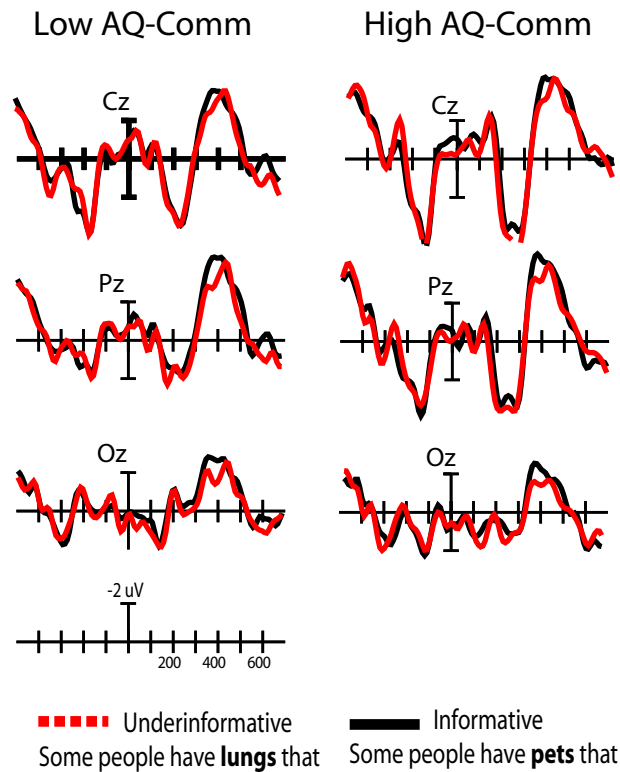
Additional Figure 2. Grand-average ERP waveforms elicited by critical words in underinformative and informative statements for items with a relatively small versus large LSA difference between conditions from Experiment 1.



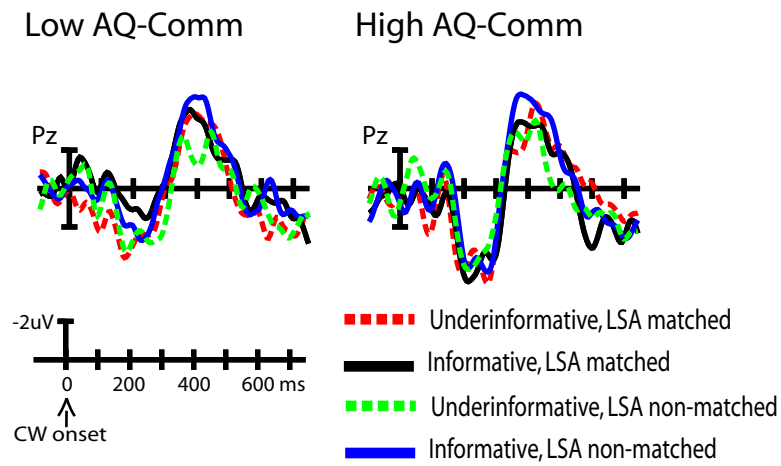
Additional Figure 3. Grand-average ERP waveforms elicited by the sentence-initial quantifiers "Some" and "Many" from Experiment 1.



Additional Figure 4. Grand-average ERP waveforms, computed using a -500 to 0 ms pre-CW baseline, elicited by critical words in underinformative (dotted lines) and informative (solid lines) statements from Experiment 2, shown at electrode locations Cz, Pz, and Oz.



Additional Figure 5. Grand-average ERP waveforms elicited by critical words in underinformative and informative statements for items with a relatively small versus large LSA difference between conditions from Experiment 2.



Additional Figure 6. Grand-average ERP waveforms elicited by the sentence-initial quantifiers "Some" and "Many" from Experiment 2.

